

TRUE NORTH
MAGNETIC NORTH
(NATIONAL GEODESIC SURVEY)
DECL. 1° 15' E, 2008

- NOTE:**
- THIS MAP IS FOR ILLUSTRATIVE PURPOSES ONLY. ACTUAL LOCATION OF ZONING BOUNDARIES ON SPECIFIC PARCELS SHALL BE FIELD LOCATED BY A REGISTERED LAND SURVEY.
 - ALL ZONE A DIMENSIONS ARE FROM THE PRIMARY SURFACE OF EACH RUNWAY.

RUNWAY DATA		
	EXISTING	ULTIMATE
RUNWAY 8/26 (TURF)	3,145' x 150'	N/A
RUNWAY B/26 (BIT)	N/A	3,700' x 75'
RUNWAY 16/34	4,001' x 75'	5,000' x 100'

LEGEND		
	EXISTING	ULTIMATE
PAVEMENT		
ZONE A		
ZONE B		
PRIMARY SURFACE		
PREVAILING ZONE A		
PREVAILING ZONE B		



BOLTON & MENK, INC.
Consulting Engineers & Surveyors
MANKATO, MN FAIRMONT, MN SLEEPY EYE, MN
BURNSVILLE, MN WILLMAR, MN CHASKA, MN
RAMSEY, MN MAPLEWOOD, MN BRAINERD, MN AMES, IA

AITKIN AIRPORT
AIRPORT ZONING ORDINANCE
LAND USE SAFETY ZONES RUNWAY 8-26
EXHIBIT 1.2

TRUE NORTH
 MAGNETIC NORTH
 (NATIONAL GEODETIC SURVEY)
 DECL. 15° E, 2008

- NOTE:
1. THIS MAP IS FOR ILLUSTRATIVE PURPOSES ONLY. ACTUAL LOCATION OF ZONING BOUNDARIES ON SPECIFIC PARCELS SHALL BE FIELD LOCATED BY A REGISTERED LAND SURVEY.
 2. SEE EXHIBIT 1.2 FOR MORE INFORMATION ON RUNWAY 8-26.



RUNWAY DATA		
	EXISTING	ULTIMATE
RUNWAY 8/26 (TURF)	3,145' x 150'	N/A
RUNWAY 8/26 (BIT)	N/A	3,700' x 75'
RUNWAY 16/34	4,001' x 75'	5,000' x 100'

LEGEND		
	EXISTING	ULTIMATE
PAVEMENT		
ZONE A		
ZONE B		
ZONE C		
CITY LIMITS		
TOWNSHIP LIMITS		

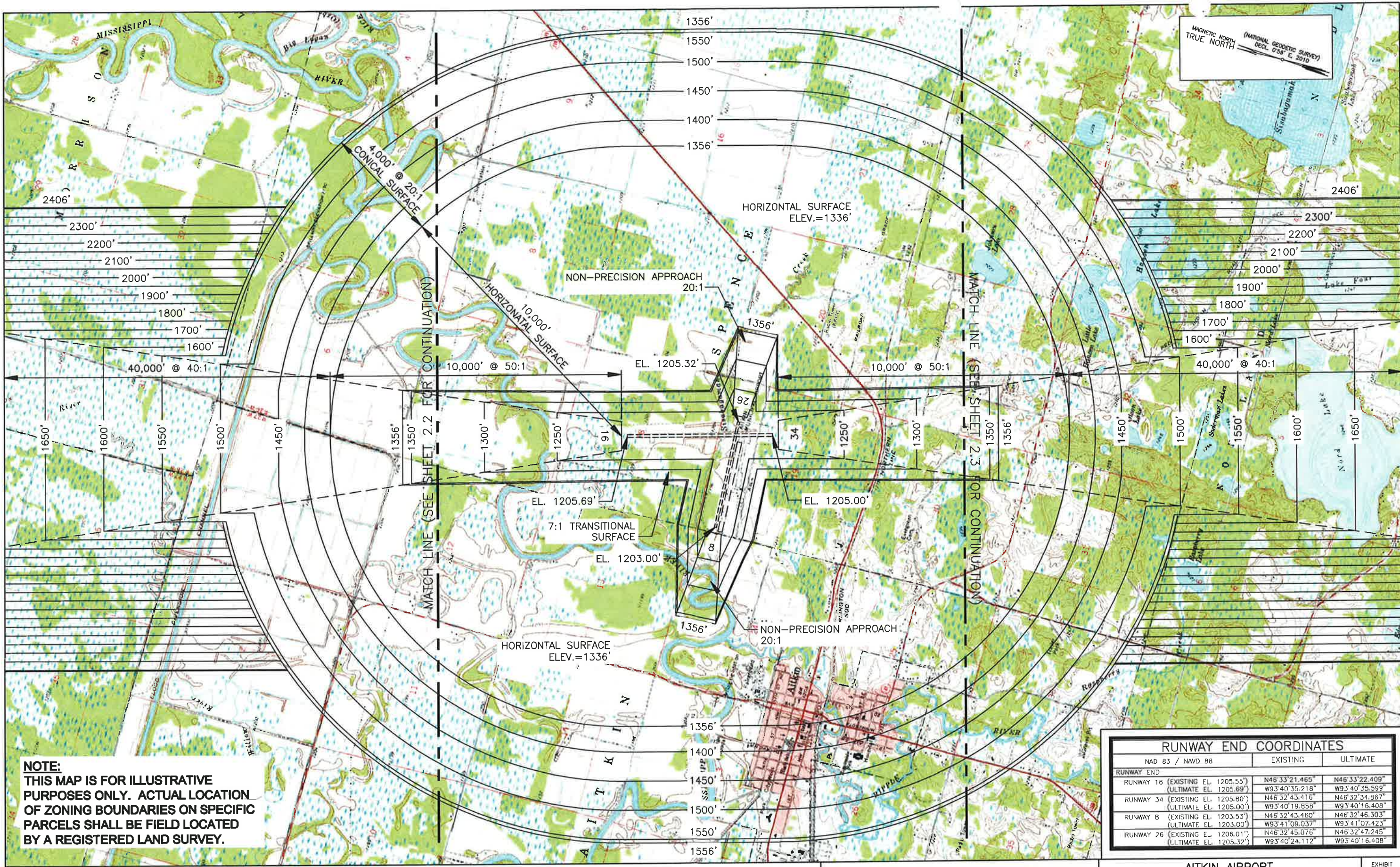


BOLTON & MENK, INC.
 Consulting Engineers & Surveyors
 MANKATO, MN FAIRMONT, MN SLEEPY EYE, MN
 BURNSVILLE, MN WILLMAR, MN CHASKA, MN
 RAMSEY, MN MAPLEWOOD, MN BRAINERD, MN AMES, IA

AITKIN AIRPORT
 AIRPORT ZONING ORDINANCE
 LAND USE SAFETY ZONES MAP

EXHIBIT
 1.1

MAGNETIC NORTH
TRUE NORTH
(NATIONAL GEODETIC SURVEY)
DECL. 0°35' E, 2010



NOTE:
THIS MAP IS FOR ILLUSTRATIVE PURPOSES ONLY. ACTUAL LOCATION OF ZONING BOUNDARIES ON SPECIFIC PARCELS SHALL BE FIELD LOCATED BY A REGISTERED LAND SURVEY.

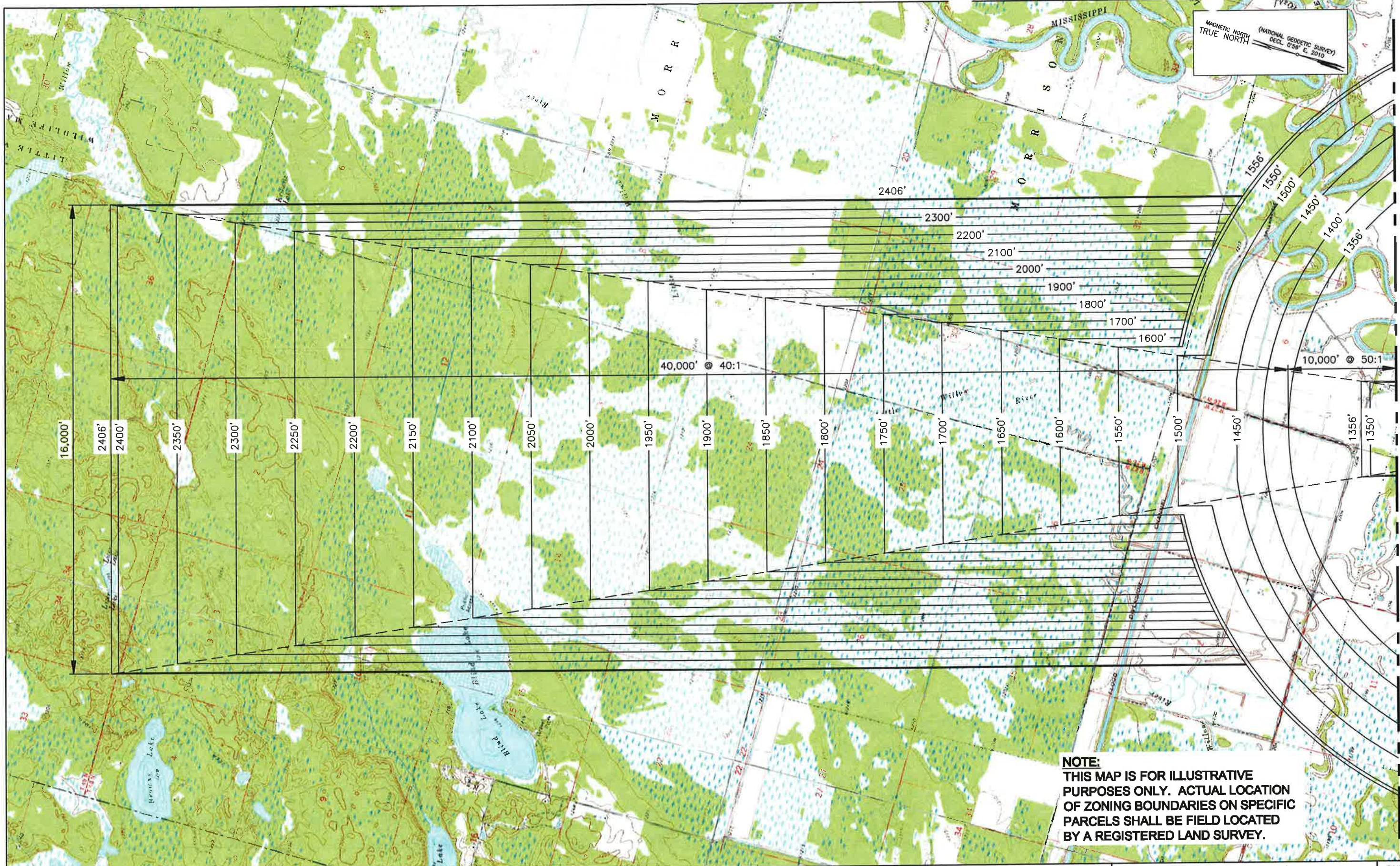
RUNWAY END COORDINATES		
NAD 83 / NAVD 88	EXISTING	ULTIMATE
RUNWAY END		
RUNWAY 16 (EXISTING EL. 1205.55') (ULTIMATE EL. 1205.69')	N46°33'21.465" W93°40'35.218"	N46°33'22.409" W93°40'35.599"
RUNWAY 34 (EXISTING EL. 1205.80') (ULTIMATE EL. 1205.00')	N46°32'43.416" W93°40'19.858"	N46°32'34.867" W93°40'16.408"
RUNWAY 8 (EXISTING EL. 1203.53') (ULTIMATE EL. 1203.00')	N46°32'43.460" W93°41'09.037"	N46°32'46.303" W93°41'07.423"
RUNWAY 26 (EXISTING EL. 1206.01') (ULTIMATE EL. 1205.32')	N46°32'45.076" W93°40'24.112"	N46°32'47.245" W93°40'16.408"



BOLTON & MENK, INC.
Consulting Engineers & Surveyors
MANKATO, MN FAIRMONT, MN SLEEPY EYE, MN
BURNSVILLE, MN WILLMAR, MN CHASKA, MN
RAMSEY, MN MAPLEWOOD, MN BRAINERD, MN AMES, IA

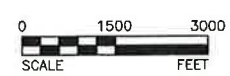
AITKIN AIRPORT
AIRPORT ZONING ORDINANCE
AIRSPACE MAP

MAGNETIC NORTH
TRUE NORTH
(NATIONAL GEODETIC SURVEY)
DECL. 0°39' E, 2010



MATCH LINE (SEE SHEET 2.1 FOR CONTINUATION)

NOTE:
THIS MAP IS FOR ILLUSTRATIVE
PURPOSES ONLY. ACTUAL LOCATION
OF ZONING BOUNDARIES ON SPECIFIC
PARCELS SHALL BE FIELD LOCATED
BY A REGISTERED LAND SURVEY.



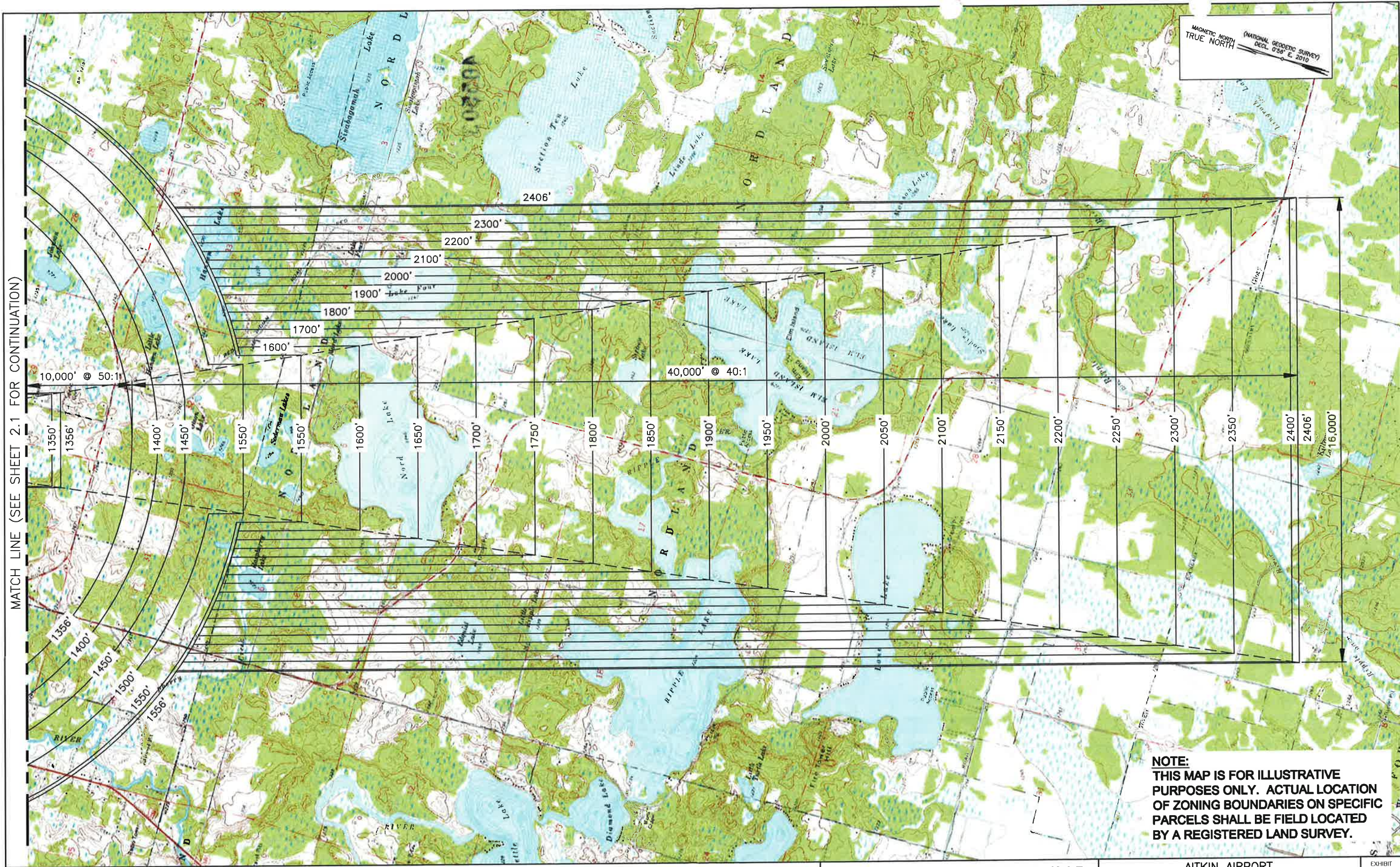
BOLTON & MENK, INC.
Consulting Engineers & Surveyors
MANKATO, MN FAIRMONT, MN SLEEPY EYE, MN
BURNSVILLE, MN WILLMAR, MN CHASKA, MN
RAMSEY, MN MAPLEWOOD, MN BRAINERD, MN AMES, IA

AITKIN AIRPORT
AIRPORT ZONING ORDINANCE
AIRSPACE MAP - NORTH APPROACH

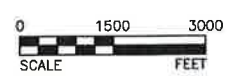
EXHIBIT
2.2

MAGNETIC NORTH
TRUE NORTH
(NATIONAL GEODETIC SURVEY)
DECL. 038° E. 2010

MATCH LINE (SEE SHEET 2.1 FOR CONTINUATION)



NOTE:
THIS MAP IS FOR ILLUSTRATIVE
PURPOSES ONLY. ACTUAL LOCATION
OF ZONING BOUNDARIES ON SPECIFIC
PARCELS SHALL BE FIELD LOCATED
BY A REGISTERED LAND SURVEY.



BOLTON & MENK, INC.
Consulting Engineers & Surveyors
MANKATO, MN FAIRMONT, MN SLEEPY EYE, MN
BURNSVILLE, MN WILLMAR, MN CHASKA, MN
RAMSEY, MN MAPLEWOOD, MN BRAINERD, MN AMES, IA

AITKIN AIRPORT
AIRPORT ZONING ORDINANCE
AIRSPACE MAP - SOUTH APPROACH

EXHIBIT
2.3